

New Features – Improvements

Preface

I would like to use the beginning of 2021 to thank all users and customers for the trustful cooperation. Thanks to you, Oil-Expert.net has now become a comprehensive program package for the fat chemist. 2020 was a particularly stressful year for all of us and 2021 will also face great challenges. Nonetheless, I'd like to take a look at 2021 with you.

We will continuously develop Oil-Expert.net – new features and improvements. Most of the suggestions for changes came from our users. Thank you very much for that. The new version 7.1.7, which was published in January 2021, contains the following enhancements.

- Deactivation of entire component groups (e.g. animal fats)
- The project management was significantly improved by
 - a sorting function according to various criteria
 - a complex search function
 - implementation of categories
- Import function of raw material proces from Excel workbookss.
- Some bug fixes. Some of them were reported by our users..

A detailed description of the new functions and improvements can be found in this newsletter. But first we would like to point out our demo version.

Demo Version

We would be happy to provide you with a full-featured demo version. The demo version can be used for three months. If necessary, the term can be extended.

The demo version not only offers all functions of the full version, the data generated with the demo version can still be used with the full version. The database is compatible with both the demo and the full version.

Oil-Expert.net

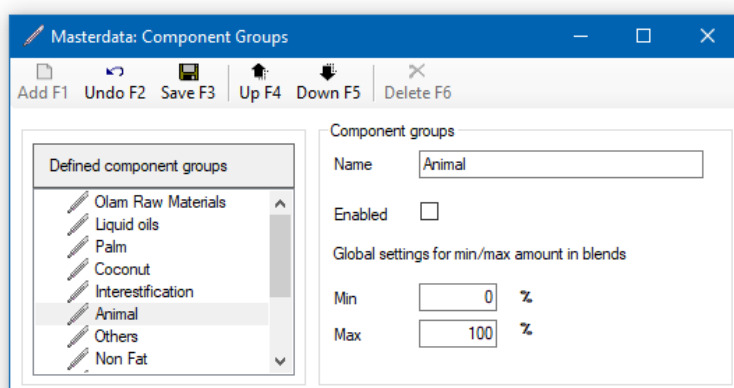
And it's that quick and easy (time required approx. 15 minutes):

- Request download link info@oil-expert.net
- Download the software package from our website
- Install Oil-Expert software
- Start Oil-Expert.net and enter the registration code
- Finished!

The software is supplied with around 40 standard components and some example projects. Using the example projects and the PDF manual, you can quickly and easily learn how to work with Oil-Expert.net. If you have any questions, please do not hesitate to contact us - by email, phone, Skype or any other medium of your choice.

Small change – big impact

Should one or more components be deactivated - ie. made invisible to the user - up to now every single component had to be edited. In the future, entire component groups can be deactivated or reactivated with a mouse click.



In the menu tree on the left side of the user interface there is the menu item *Master data / Components / Component groups*. The complete component group can be deactivated or activated by clicking on the *Enabled* checkbox, in the above dialog the component group **animal fats**. When deactivated, the group is no longer available until it is reactivated again.

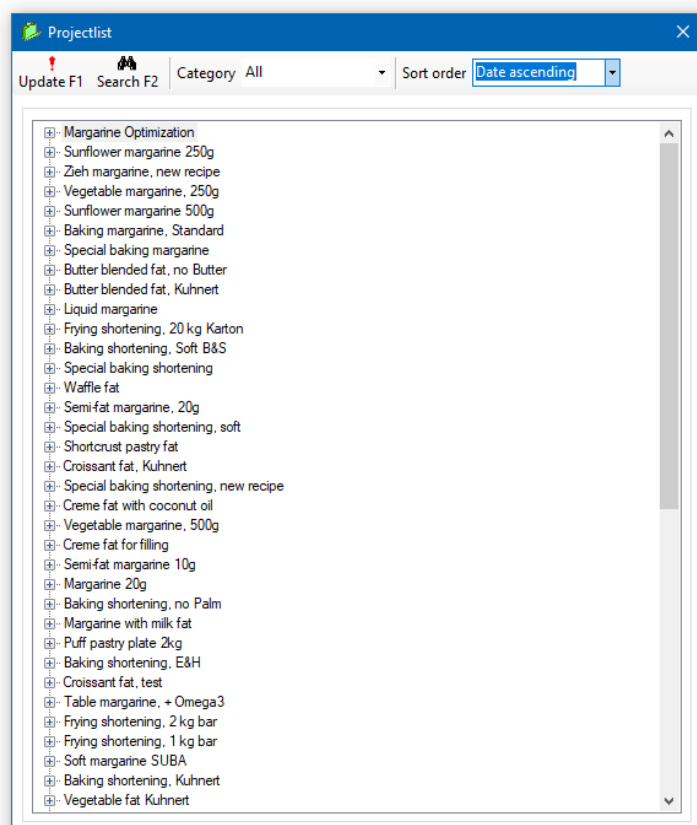
Project Management

The project management has been expanded to include functions that support the convenient administration and search for individual projects. This is

- Implementation of categories
- a sorting function according to three criteria (further criteria are possible as required)
 - Name of the project
 - Creation date ascending (the oldest project comes first)
 - Creation date descending (the newest project comes first)
- an extensive search function

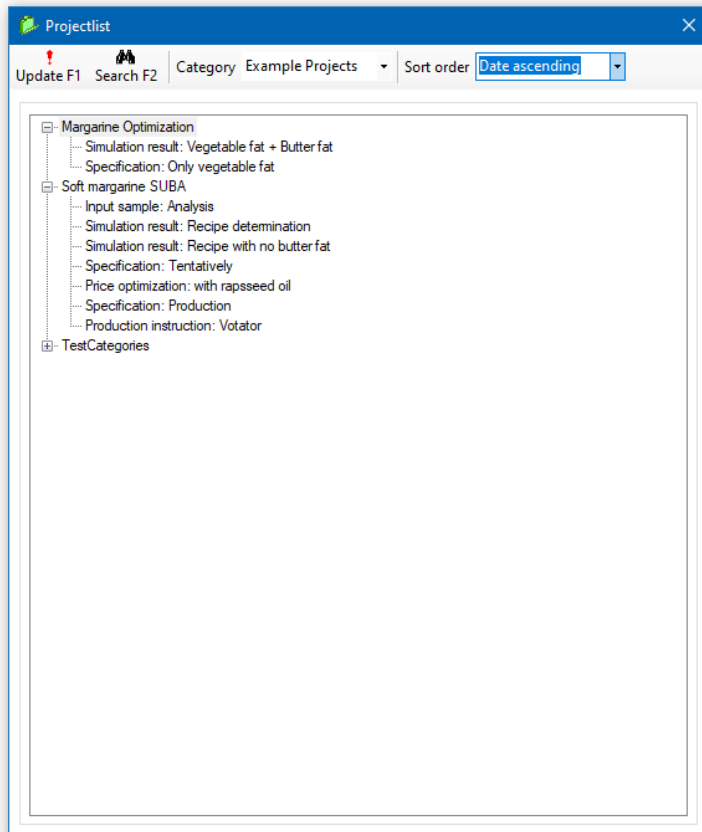
Categories

The categories can be defined as required and assigned to each project after definition. E.g. Shortening, vegetable margarine, sunflower margarine, puff pastry, half fat and also customer names as categories are possible. The dialog shown below shows the operating elements and a very large number of projects.

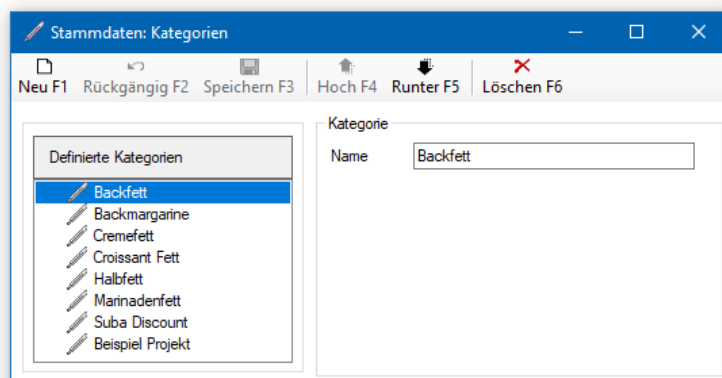


Oil-Expert.net

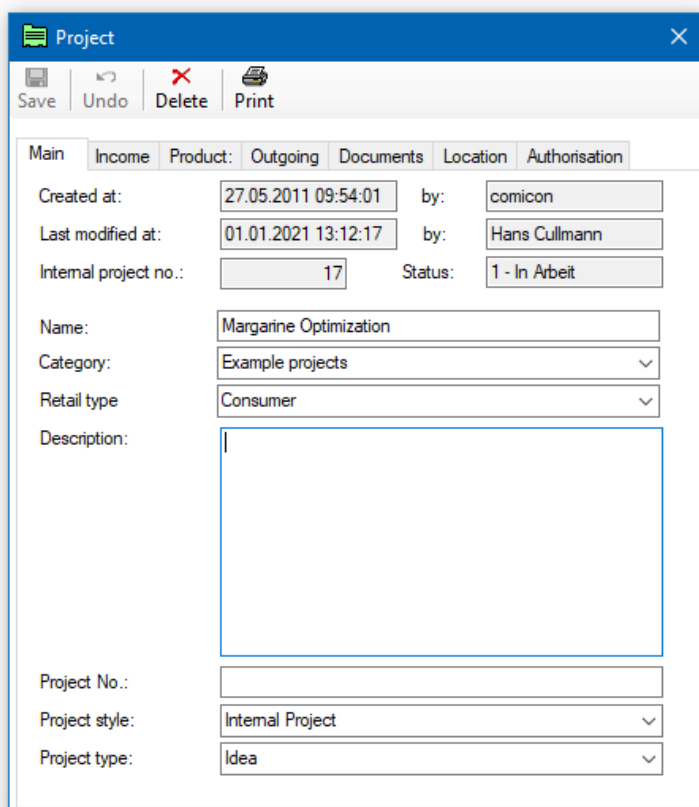
All projects are displayed by default. The selection box then shows **All**. After selecting a category - here **Example Project** - only projects with this category are displayed (see next figure).



There is a separate dialog to define and edit the categories (see the figure below).



In the menu tree on the left side of the user interface you will find the menu item *Master data / Project data / Project categories*. After clicking, the dialog opens and the categories can be defined. After the definition, the categories can be assigned to the projects. This is done in the project dialog, which opens after clicking with the right mouse button or double-clicking on a project in the project overview (see above).



Field	Value
Created at:	27.05.2011 09:54:01
by:	comicon
Last modified at:	01.01.2021 13:12:17
by:	Hans Cullmann
Internal project no.:	17
Status:	1 - In Arbeit
Name:	Margarine Optimization
Category:	Example projects
Retail type	Consumer
Description:	
Project No.:	
Project style:	Internal Project
Project type:	Idea

With the *Category* selection box, the desired category - here **Example** Project - can be assigned to the project. The default is No Category.

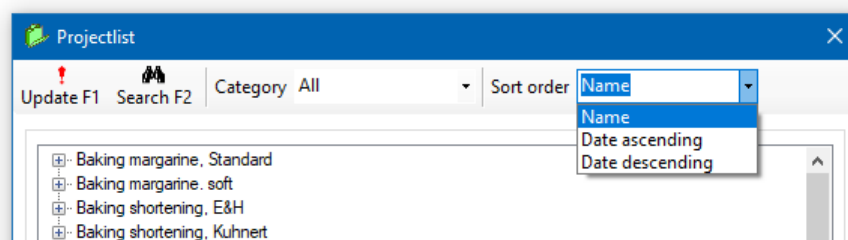
The last category which is set in the projekt overview dialog is saved after the software is closed and is active again when the software is restarted.

Sorting Function

The sorting function enables sorting according to three criteria (see next figure)

:

- Name of the project
- Date ascending
The project created first is displayed first
- Date descending
The project created last is displayed first



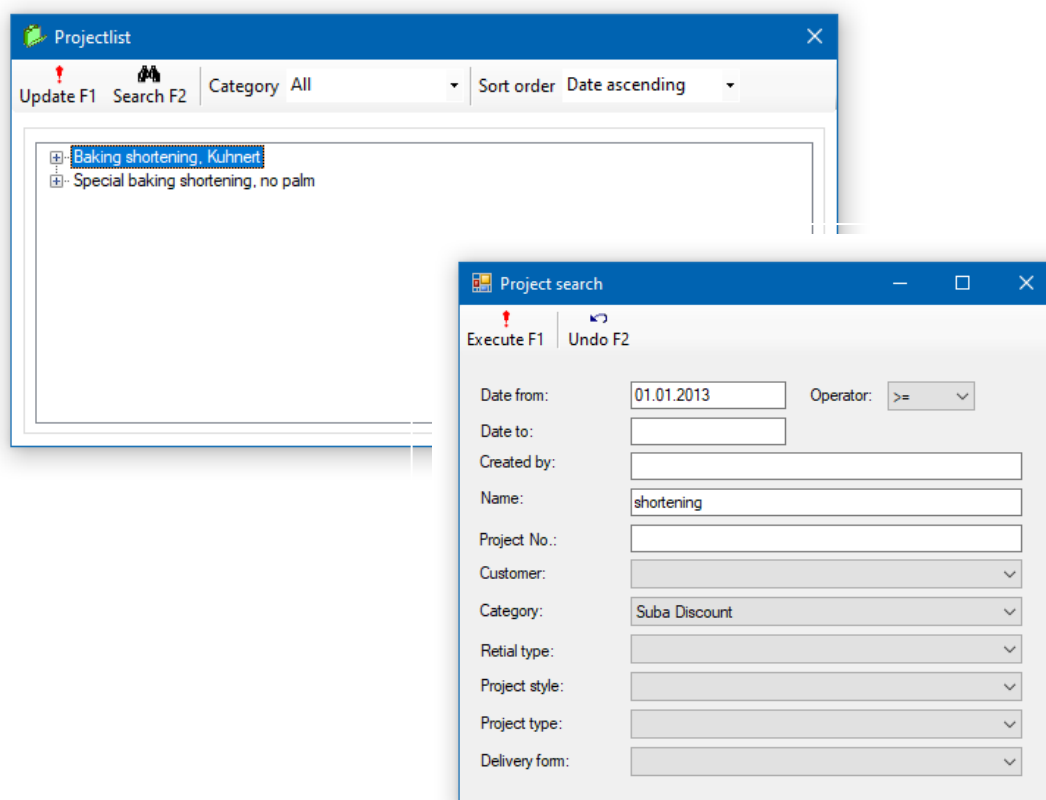
The sorting function can refer to all projects or to just a selection with the function category or the search function. As with the category, the last selected sorting order is saved when the software is closed and applied again when the software is restarted.

If necessary, the number of sorting criteria can be expanded. Please contact our service department for this.

Search Function

A search function is already integrated in *Oil-Expert.net*, but only at product level. Here you can search for recipes and parameters. If matching, the datasheets found are displayed in a list.

Now the search is expanded to the project level. There are of course completely different search criteria here than for datasheets. The search dialog (see figure below) is opened from the project overview by clicking on the button with the search symbol.



The *Project Search* dialog contains all fields that can be searched for. Only the predefined data can be selected from the selection boxes, e.g. for categories. Any entries can be made in the text fields for *Created by*, *Name* and *Project No.* The search is not based on the exact entry, but rather whether the entered text appears in the data field. The result of the designation **Shortening** and **SUBA Discount** provides all projects in which the terms **Shortening** and **SUBA Discount** occurs in the project name (see project search).

If you enter search criteria in several fields, they are linked with AND in an SQL statement for the database query.

The two date fields in the upper part of the dialog are used to query when the project was created. If you enter a date in both fields, all projects will be searched that were created between these two dates. If you only enter a value in Date of, an operator must also be selected to the right of it, e.g. >, >=, = etc.

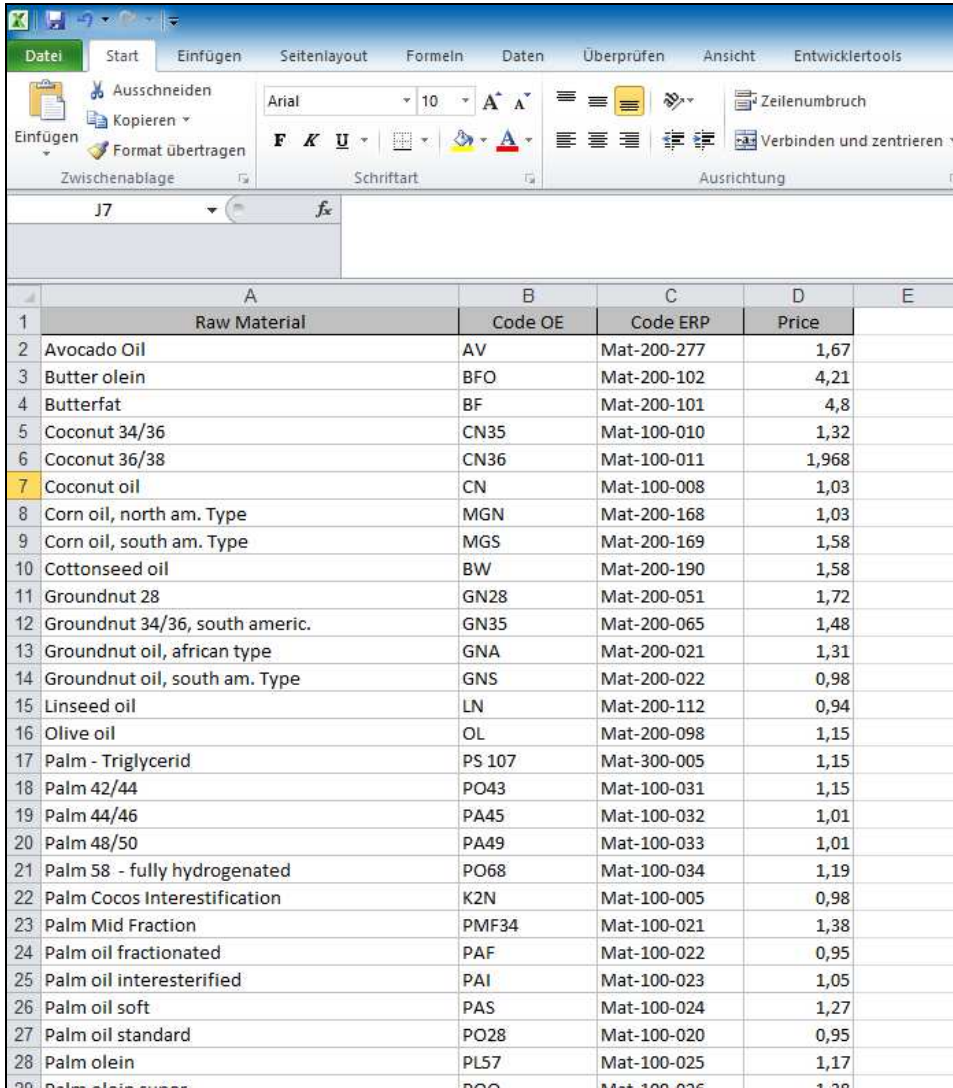
Incidentally, the date can also simply be entered as 10.1. It will then be automatically converted to 01/10/2021.

Import Raw Material Prices

So far it was also possible to import different data, e.g. Recipes, components and raw material data and raw material prices. The data must, however, be available as a text file in a predefined format and the data files must have a previously defined file extension.

With the new import function it is possible to import raw material prices directly from EXCEL Workbooks. The raw material prices are usually available as an EXCEL workbook or can be exported from an ERP system.

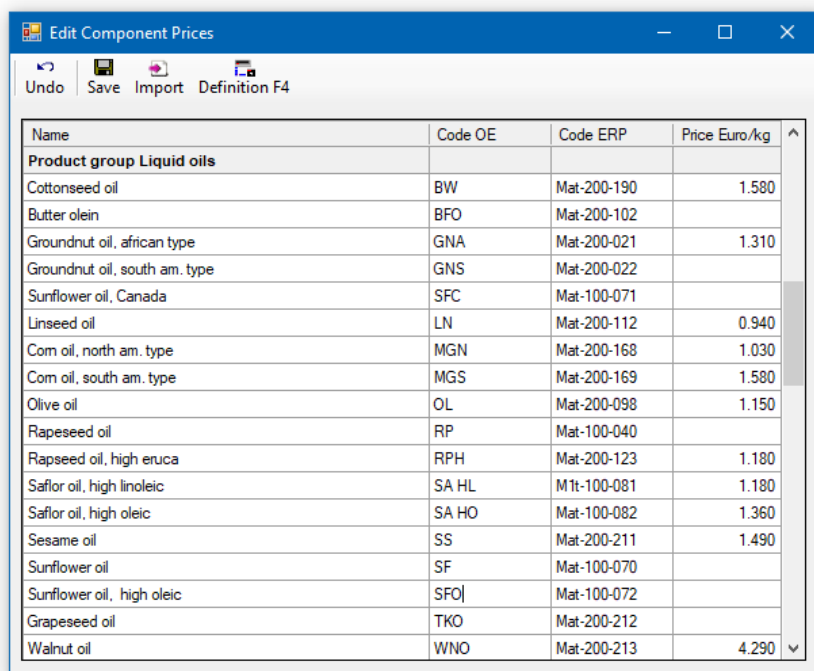
The data format in the worksheet is usually as shown below, but the function can also be adapted to other formats.



	A	B	C	D	E
1	Raw Material	Code OE	Code ERP	Price	
2	Avocado Oil	AV	Mat-200-277	1,67	
3	Butter olein	BFO	Mat-200-102	4,21	
4	Butterfat	BF	Mat-200-101	4,8	
5	Coconut 34/36	CN35	Mat-100-010	1,32	
6	Coconut 36/38	CN36	Mat-100-011	1,968	
7	Coconut oil	CN	Mat-100-008	1,03	
8	Corn oil, north am. Type	MGN	Mat-200-168	1,03	
9	Corn oil, south am. Type	MGS	Mat-200-169	1,58	
10	Cottonseed oil	BW	Mat-200-190	1,58	
11	Groundnut 28	GN28	Mat-200-051	1,72	
12	Groundnut 34/36, south americ.	GN35	Mat-200-065	1,48	
13	Groundnut oil, african type	GNA	Mat-200-021	1,31	
14	Groundnut oil, south am. Type	GNS	Mat-200-022	0,98	
15	Linseed oil	LN	Mat-200-112	0,94	
16	Olive oil	OL	Mat-200-098	1,15	
17	Palm - Triglycerid	PS 107	Mat-300-005	1,15	
18	Palm 42/44	PO43	Mat-100-031	1,15	
19	Palm 44/46	PA45	Mat-100-032	1,01	
20	Palm 48/50	PA49	Mat-100-033	1,01	
21	Palm 58 - fully hydrogenated	PO68	Mat-100-034	1,19	
22	Palm Cocos Interestification	K2N	Mat-100-005	0,98	
23	Palm Mid Fraction	PMF34	Mat-100-021	1,38	
24	Palm oil fractionated	PAF	Mat-100-022	0,95	
25	Palm oil interesterified	PAI	Mat-100-023	1,05	
26	Palm oil soft	PAS	Mat-100-024	1,27	
27	Palm oil standard	PO28	Mat-100-020	0,95	
28	Palm olein	PL57	Mat-100-025	1,17	
29	Palm olein super	POO	Mat-100-026	1,28	

Oil-Expert.net

In the 3rd and 4th columns from the left, the two important data are the material number of the ERP system and the current price. The material number of the ERP system can either be the same as the code in Oil-Expert.net but also different. There is a conversion table for the import. It can be changed in the dialog for editing the prices.



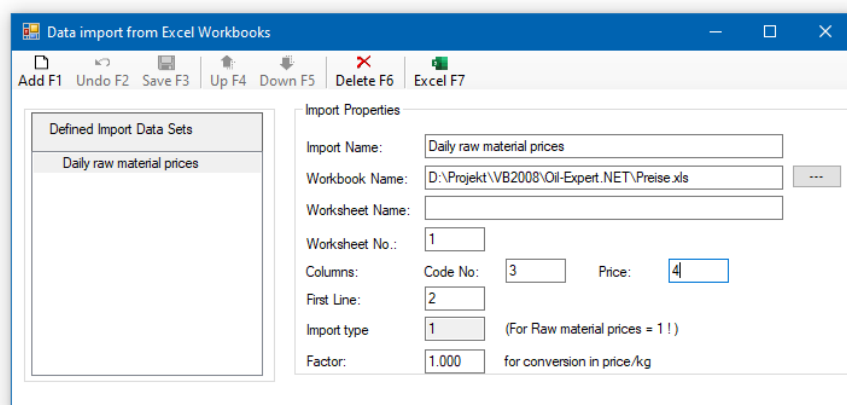
Name	Code OE	Code ERP	Price Euro/kg
Product group Liquid oils			
Cottonseed oil	BW	Mat-200-190	1.580
Butter olein	BFO	Mat-200-102	
Groundnut oil, african type	GNA	Mat-200-021	1.310
Groundnut oil, south am. type	GNS	Mat-200-022	
Sunflower oil, Canada	SFC	Mat-100-071	
Linseed oil	LN	Mat-200-112	0.940
Corn oil, north am. type	MGN	Mat-200-168	1.030
Corn oil, south am. type	MGS	Mat-200-169	1.580
Olive oil	OL	Mat-200-098	1.150
Rapeseed oil	RP	Mat-100-040	
Rapeseed oil, high eruca	RPH	Mat-200-123	1.180
Saffor oil, high linoleic	SA HL	M1t-100-081	1.180
Saffor oil, high oleic	SA HO	Mat-100-082	1.360
Sesame oil	SS	Mat-200-211	1.490
Sunflower oil	SF	Mat-100-070	
Sunflower oil, high oleic	SFO	Mat-100-072	
Grapeseed oil	TKO	Mat-200-212	
Walnut oil	WNO	Mat-200-213	4.290

All active components are listed in this dialog. The two right columns correspond to the table columns 3 and 4 in the EXCEL worksheet. When the price dialog is started for the first time, synchronization takes place. The ERP code is set alongside the code in Oil-Expert.net and any existing prices are deleted. If the ERP code is different, it can be edited in this dialog. The prices can also be changed after a successful import.

The data import is triggered by clicking the *Import* button. The imported data is then displayed and automatically saved.

Before the first import can be carried out, some definitions for the workbook and worksheet must be made. This is done in the dialog shown on the next side.

Oil-Expert.net



The dialog is structured in the same way as all dialogs for editing 'simple' master data. For the time being, only the import of the daily prices is planned, but expansions are already being considered.

- First enter a name for the import function.
- Then you select the workbook via a file dialog that opens when you click on the small button to the right of the field. Once the workbook has been defined, it can be opened by clicking on *Excel*.
- Next, the worksheet must be defined, either the worksheet name or the number of the worksheet in the workbook.
- The column numbers for ERP code and price follow. The count is from left to right, starting with 1
- The first line indicates the line from which the first data are to be found, starting with 1.
- The import type is assigned automatically.
- The factor is used to relate the prices to one kilogram. Price / kg is the unit with which Oil-Expert.net calculates. If the price is e.g. per 100 kg delivered, the factor 1 is set to 0.01. The standard factor is 1.

After a successful definition, the data can be imported. If there is no definition or if the definition is incorrect, an error message is coming up.

Oil-Expert.net

Imprint

We would be glad to provide you with further information. Please feel free to contact one of our distributors.

Dr. Cullmann Consulting | Haakestr. 50 | 21075 Hamburg/Germany
Phone +49(0)40 703 8569 12 | Fax +49(0)40 703 8569 19
info@oil-expert.net | www.oil-expert.net

Deutsche Gesellschaft für Fettwissenschaft e.V. | Varrentrappstraße 40-42
60486 Frankfurt am Main/Germany
Phone +49(0)69 7917 529 | Fax +49(0)69 7917 584
info@dgfett.de | www.dgfett.de/oil-expert

LAIX Technologies UG | Am Fasanenhang 5 | 52379 Langerwehe/Germany
Phone +49(0)2409 48798 07 | Fax +49(0)2409 48798 08
info@laix-tech.de | www.laix-tech.de/oil-expert.php

Subject to changes in design and scope of delivery as well as further technical development! © Dr. Cullmann